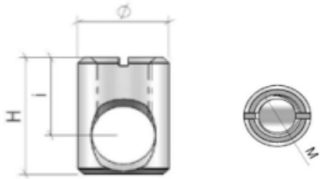




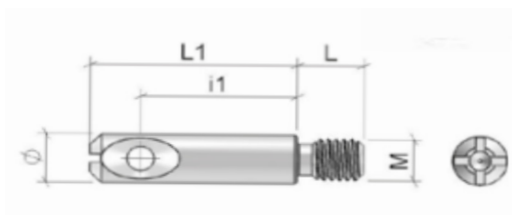
## BARILOTTO Ø15



Ø	H	M	i	SPES
15	19	M10	12	24
15	21	M10	14	28

MATERIALE: FERRO  
FINITURA: ZINCATO

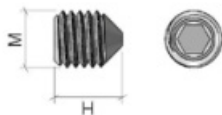
## TIRANTE Ø10



Ø	L	L1	M	il
10	8,5	37,5	M8	30
10	8,5	40	6 euro	30

MATERIALE: FERRO  
FINITURA: ZINCATO

## GRANO M6

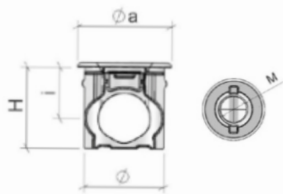


H	M
12	M10

MATERIALE: FERRO  
FINITURA: ZINCATO



## BARILOTTO Ø15 CON BORDO

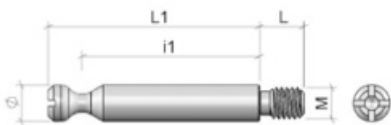


Ø	H	M	i	SPES
15	19	M10	12	24
15	21	M10	14	28

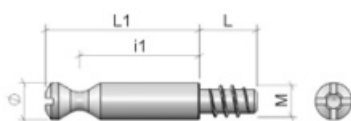
MATERIALE: ZAMA

FINITURA: GREZZO ; ZINCATO; ZINCATO NICHEL NERO ; BRONZATO

## TIRANTE Ø07



Ø	L	L1	M	il
7	8,5	40,5	M6	34

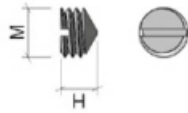


Ø	L	L1	M	il
7	11	30,5	6 euro	24
7	11	40,5	6 euro	24

MATERIALE: FERRO  
FINITURA: ZINCATO

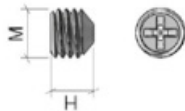


## GRANO 120°



H	M
6	M8

MATERIALE: FERRO  
FINITURA: ZINCATO, ZINCATO NICHEL NERO, BRONZATO



H	M
7	M8
7	M8x1

MATERIALE: ZAMA  
FINITURA: GREZZO ; ZINCATO; ZINCATO NICHEL NERO ; BRONZATO